



The Tigercat E-series are the world's most advanced, efficient and productive skidders. The unique drive system combines hydrostatics with electronic control technology, delivering wood to roadside at the lowest cost in a variety of terrain conditions, tree sizes and species.

## BENEFITS AND ADVANTAGES:

### Powerful, efficient Tigercat FPT engine

- Automatic variable engine speed for high fuel efficiency
- Operator controlled maximum speed setting
- Simple, reliable SCR emission control technology for Tier 4f

### High capacity cooling system

- Automatic variable pitch fan for reduced fuel consumption in cold climates
- Reversing airflow to keep the heat exchangers clean

### Enhanced hydrostatic drive system

- Extremely efficient driveline
- High performance, minimal wheel spin in adverse terrain

### EHS 'efficient high speed' drive option

- Extremely efficient driveline with electronic control system
- High speed and powerful tractive effort in forward or reverse

### Advanced electronic control system

- Intuitive user interface and excellent fuel economy
- Provides precise control of all machine functions

### Tigercat axles are approved for flotation or dual tire configurations

### Designed and built for extreme duty

- Strength optimized frames
- Strong, long-life centre section constructed with thick steel plate, oversized pins and tapered roller bearings

### Excellent service access

- Neat, spacious engine enclosure
- Easy access to daily service points
- Tilt cab for access to pumps, motors and driveline

### Turnaround equipped operator's station

- Two-position Turnaround seat with ergonomic joystick steering and full rear-facing drive controls
- Grapple and arch functions controlled by one joystick
- Excellent visibility to the sides of the engine house

### High capacity Tigercat dual cylinder grapples

- Choice of plate or box tongs
- Wide tip-to-tip openings to quickly gather scattered bunches

# SPECIFICATIONS

## 620E

## 630E

## 635E

### DIMENSIONS with standard tires and arch

LENGTH	7 365 mm (290 in)	7 620 mm (300 in)	9 475 mm (373 in)
WHEELBASE	4 065 mm (160 in)	4 320 mm (170 in)	5 230 mm (206 in)
WIDTH	3 330 mm (131 in)	3 330 mm (131 in)	3 330 mm (131 in)
Narrow offset	3 020 mm (119 in)	3 020 mm (119 in)	3 125 mm (123 in)
HEIGHT	3 150 mm (124 in)	3 150 mm (124 in)	3 150 mm (124 in)
GROUND CLEARANCE	635 mm (25 in)	635 mm (25 in)	635 mm (25 in)
WEIGHT	17 175 kg (37,750 lb)	17 575 kg (38,750 lb)	22 110 kg (48,750 lb)

### POWER

ENGINE	Tigercat FPT N67 Tier 4f, 164 kW (220 hp) @ 2,200 rpm	Tigercat FPT N67 Tier 4f, 194 kW (260 hp) @ 2,200 rpm	Tigercat FPT N67 Tier 4f, 194 kW (260 hp) @ 2,200 rpm
Optional	Tigercat FPT N67 Tier 2, 168 kW (225 hp) @ 2,100 rpm	Tigercat FPT N67 Tier 2, 198 kW (266 hp) @ 2,100 rpm	Tigercat FPT N67 Tier 2, 198 kW (266 hp) @ 2,100 rpm
AIR FILTRATION	Precleaner and 2-stage engine air cleaner	Precleaner and 2-stage engine air cleaner	Precleaner and 2-stage engine air cleaner
TOP SPEED	19 km/h (12 mph)	19 km/h (12 mph)	14 km/h (9 mph)
COOLING	Side-by-side aluminum radiator, oil cooler, charge air cooler and A/C condenser	Side-by-side aluminum radiator, oil cooler, charge air cooler and A/C condenser	Side-by-side aluminum radiator, oil cooler, charge air cooler and A/C condenser
FAN	Fixed pitch, blower	Flexxaire® variable pitch, reversing	Flexxaire® variable pitch, reversing
Optional	Flexxaire® variable pitch, reversing	N/A	N/A
FUEL CAPACITY usable	305 L (81 US gal)	305 L (81 US gal)	305 L (81 US gal)
Optional	430 L (110 US gal)	430 L (110 US gal)	430 L (110 US gal)
DEF CAPACITY Tier 4f	43 L (11 US gal)	43 L (11 US gal)	43 L (11 US gal)

### POWER TRAIN

TRANSMISSION	Single-speed mechanical Variable speed hydrostatic (2) variable displacement motors	Single-speed mechanical Variable speed hydrostatic (2) variable displacement motors	Single-speed mechanical Variable speed hydrostatic (2) variable displacement motors
Optional	EHS (efficient high speed) hydrostatic drive Single-speed mechanical Variable speed hydrostatic (2) variable displacement motors	EHS (efficient high speed) hydrostatic drive Single-speed mechanical Variable speed hydrostatic (2) variable displacement motors	N/A
AXLE, FRONT	Tigercat IB17, inboard planetary, barrel differential, 15° oscillating	Tigercat OB17, outboard planetary, barrel differential, +/-15° oscillation	Tigercat OB17, outboard planetary, barrel differential, +/- 15° oscillation
Optional	Tigercat OB17, outboard planetary, barrel differential, 15° oscillating	N/A	N/A
AXLE, REAR	Tigercat IB17, inboard planetary, barrel differential, fixed	Tigercat OB17, outboard planetary, barrel differential, fixed	Tigercat WOF17 wide-spread bogie, outboard planetary, flange differential, +/- 15° oscillation
Optional	Tigercat IB17, inboard planetary, barrel differential, fixed	N/A	Tigercat HOF17 high-clearance bogie, outboard planetary, flange differential
DIFFERENTIAL LOCKS	Independent front and rear	Independent front and rear	Independent front and rear

### HYDRAULIC SYSTEM

PUMP, DRIVE	Piston	Piston	Piston
PUMP, MAIN 1	Piston for all machine functions	Piston for all machine functions	Piston for all machine functions
PUMP, MAIN 2	Gear for cooling	Gear for cooling	Gear for cooling
FILTRATION	(2) spin-on, 7 micron full-flow	(2) spin-on, 7 micron full-flow	(2) spin-on, 7 micron full-flow
CYLINDERS, ARCH	(2) 100 mm (4 in) bore (single function) (4) 100 mm (4 in) bore (dual function)	(2) 100 mm (4 in) bore (single function) (4) 100 mm (4 in) bore (dual function)	(4) 115 mm (4.5 in) bore (dual function)
CYLINDERS, STEER	(2) 85 mm (3.25 in) bore	(2) 85 mm (3.25 in) bore	(2) 85 mm (3.25 in) bore
CYLINDERS, BLADE	(2) 90 mm (3.5 in) bore	(2) 90 mm (3.5 in) bore	(2) 90 mm (3.5 in) bore
RESERVOIR	105 L (28 US gal)	105 L (28 US gal)	105 L (28 US gal)

### BRAKES

DYNAMIC BRAKING	Hydrostatic	Hydrostatic	Hydrostatic
SECONDARY BRAKES	Enclosed, oil cooled	Enclosed, oil cooled	Enclosed, oil cooled
PARK BRAKE	Caliper; Spring applied, hydraulic release	Caliper; Spring applied, hydraulic release	Caliper; Spring applied, hydraulic release

### TIRES

STANDARD	30.5Lx32,26	30.5Lx32,26	35.5Lx32,24 (front); 30.5Lx32,26 (rear)
OPTIONAL	35.5x32,24; 73x44-32,16	35.5x32,24; 73x44-32,16	See next page*

### ARCH

STANDARD	Single function, continuous rotate	Single function, continuous rotate	Dual function, high lift, continuous rotate
OPTIONAL	Dual function, continuous rotate	Dual function, continuous rotate	N/A

### GRAPPLE

STANDARD	Tigercat 1,39 m <sup>2</sup> (15 ft <sup>2</sup> ) 2-cylinder, plate or box tong	Tigercat 1,58 m <sup>2</sup> (17 ft <sup>2</sup> ) 2-cylinder, plate or box tong	Tigercat 1,95 m <sup>2</sup> (21 ft <sup>2</sup> ) 2-cylinder, plate or box tong
MAXIMUM OPENING	3 505 mm (138 in)	3 630 mm (143 in)	3 810 mm (150 in)
OPTIONAL	Tigercat 1,58 m <sup>2</sup> (17 ft <sup>2</sup> ) 2-cylinder, plate or box tong	Tigercat 1,76 m <sup>2</sup> (19 ft <sup>2</sup> ) 2-cylinder, plate or box tong	Tigercat 2,32 m <sup>2</sup> (25 ft <sup>2</sup> ) 2-cylinder, plate or box tong
MAXIMUM OPENING	3 630 mm (143 in)	3 710 mm (146 in)	3 835 mm (151 in)

### BLADE

WIDTH	2 285 mm (90 in)	2 285 mm (90 in)	2 285 mm (90 in)
With optional extensions	2 920 mm (115 in)	2 920 mm (115 in)	2 920 mm (115 in)

# SPECIFICATIONS

## 620E

## 630E

## 635E

### ELECTRICAL

BATTERY	(2) 12 v	(2) 12 v	(2) 12 v
ALTERNATOR	80 amp, 24 v	80 amp, 24 v	80 amp, 24 v
SYSTEM VOLTAGE	24 v	24 v	24 v

### OPERATOR'S STATION

CAB	Insulated, pressurized and isolation mounted; Air conditioner/heater/defroster; (2) doors with sliding side windows and hinged screens Forward sloping windshield; AM/FM digital stereo CD, CB radio
SEAT	Extreme duty Turnaround, air ride; Fully adjustable height, seat back recline, lumbar support and armrest 2-position mechanical lock, 100° rotating for rear-facing drive, heated and cooled
OPERATOR CONTROLS	Electronic, joystick for arch/grapple/blade/steering; Electronic, foot pedal, front and rear with forward/reverse selector switch for drive Electronic control system with colour LCD display screen for machine monitoring and function adjustment

### OTHER STANDARD EQUIPMENT

Alarm for reverse drive; Fuel suction strainer Fire extinguisher; Pressurized water system Fenders	Alarm for reverse drive; Fuel suction strainer Fire extinguisher; Pressurized water system Fenders	Alarm for reverse drive; Fuel suction strainer Fire extinguisher; Pressurized water system
--	--	---

### OPTIONAL EQUIPMENT

Hydraulic winch; Halogen lighting package; HID lighting package Cold weather kit	Hydraulic winch; Halogen lighting package; HID lighting package Cold weather kit	Hydraulic winch; Halogen lighting package HID lighting package Cold weather kit
--	--	---

TIGERCAT RESERVES THE RIGHT TO AMEND THESE SPECIFICATIONS AT ANY TIME WITHOUT NOTICE

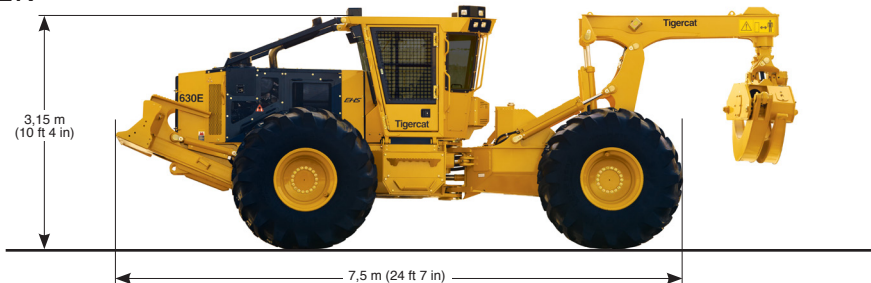
## TIGERCAT 620E SKIDDER

An all around skidder suited to most clear fell and thinning applications.



## TIGERCAT 630E SKIDDER

Best suited to high volume applications, challenging terrain and demanding duty cycles.



## TIGERCAT 635E SKIDDER

Tigercat's highest production skidder. Ideal in wet and steep terrain and long distance hauling.



\*Optional 635E front/rear tire configurations (2) 30.5Lx32,26 (4) 780/50X28.5  
(2) 35.5Lx32,24 (4) 780/50X28.5



*Rotating seat with joystick steering. Better ergonomics and reduced neck strain.*



*Comfortable seating position when travelling grapple-forward or gathering a bunch.*

## TURNaround®

Tigercat's exclusive Turnaround seat provides full rear-facing machine control.

Drive comfortably and operate all machine functions with optimal visibility whether travelling blade-forward or grapple-forward.

Quicker cycles, reduced fuel consumption, improved decking capabilities and added versatility.

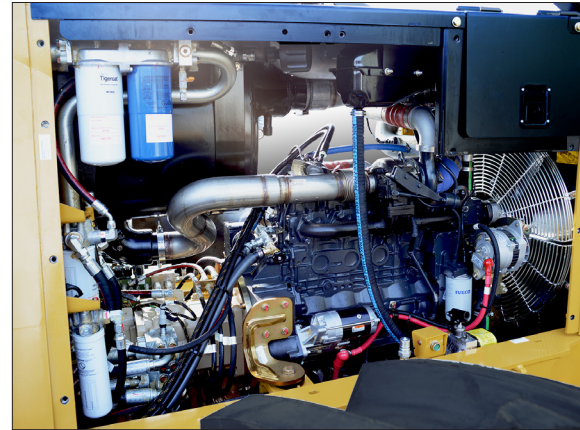


*Convenient access to all service points promotes better machine maintenance routines.*

*Excellent layout with easy access to all major components.*

*Tilting cab to access pumps and driveline*

*Clean routing for hoses and wires.*



*Neat, clean engine house.*

## Tigercat® by **FPT**

Tigercat FPT emission technology is simple and reliable, meeting Tier 4 emission standards without the complexities of a variable geometry turbocharger, EGR system, intake throttle body or diesel particulate filter. The key is the patented selective catalyst reduction (SCR) system. Tigercat FPT engines offer improved reliability and lower long-term maintenance costs.

**TIGERCATPOWER.  
TIGERCATSUPPORT.**



*All E-series models are standard equipped for dual or flotation tires.*



*The six-wheel drive 635E is ideal for extreme duty applications*



*High capacity dual cylinder grapples and high visibility arch*

© 2001 - 2016 Tigercat International Inc. All Rights Reserved. TIGERCAT, WIDERANGE, TURNAROUND, ER, EHS, and TEC, their respective logos, TOUGH RELIABLE PRODUCTIVE, TIGERCAT TV, "Tigercat Orange" and BETWEEN THE BRANCHES, as well as corporate and product identity, are trademarks of Tigercat International Inc., and may not be used without permission. TIGERCAT, TURNAROUND, WIDERANGE and ER, and their respective logos are registered trademarks of Tigercat International Inc.

54 Morton Ave. East  
Brantford, Ontario  
Canada, N3R 7J7  
Mail: Box 637 N3T 5P9  
620E/630E/635E 1.4 0216

E-mail: [comments@tigercat.com](mailto:comments@tigercat.com)  
Internet: [www.tigercat.com](http://www.tigercat.com)  
Tel: (519) 753-2000  
Fax: (519) 753-8272

# Tigercat®