



The Tigercat D-series are the world's most advanced, efficient and productive skidders. The unique drive system combines hydrostatics with electronic control technology, delivering wood to roadside at the lowest cost in a variety of terrain conditions, tree sizes and species.

## BENEFITS AND ADVANTAGES:

### Powerful and efficient Tier III engine

- Automatic variable engine speed for high fuel efficiency
- Operator controlled maximum speed setting

### High capacity cooling system

- Automatic variable pitch fan for reduced fuel consumption in cold climates
- Reversing airflow to keep the heat exchangers clean

### Enhanced hydrostatic drive system

- Extremely efficient driveline
- Excellent performance in adverse terrain

### Advanced electronic control system

- Intuitive user interface and better fuel economy
- Provides precise control of all machine functions

### Standard axles are approved for flotation or dual tire configurations

### Designed and built for extreme duty

- Strength optimized frames
- Strong, long-life centre section constructed with thick steel plate, oversized pins and tapered roller bearings

### Excellent service access

- Neat, spacious engine enclosure
- Easy access to daily service points
- Tilt cab for access to pumps, motors and driveline

### Turnaround equipped operator's station

- Two-position Turnaround seat with ergonomic joystick steering and full rear-facing drive controls
- Grapple and arch functions controlled by one joystick
- Excellent visibility to the sides of the engine house

### Large capacity Tigercat dual cylinder grapples

- Choice of plate or box tongs
- Widest tip-to-tip openings in each size class to quickly gather scattered bunches

## TURNaround®

Tigercat's exclusive Turnaround seat provides full rear-facing machine control. Drive comfortably and operate all machine functions with optimal visibility whether travelling blade-forward or grapple-forward. Quicker cycles, reduced fuel consumption, improved decking capabilities and added versatility.

# SPECIFICATIONS

## 620D

## 630D

## 635D

### DIMENSIONS with standard tires and arch

LENGTH.....	7 240 mm (285 in).....	7 495 mm (295 in).....	9 350 mm (368 in)
WHEELBASE.....	3 940 mm (155 in).....	4 190 mm (165 in).....	5 105 mm (201 in)
WIDTH.....	3 330 mm (131 in).....	3 330 mm (131 in).....	3 330 mm (131 in)
Narrow offset.....	3 020 mm (119 in).....	3 020 mm (119 in).....	3 125 mm (123 in)
HEIGHT.....	3 150 mm (124 in).....	3 150 mm (124 in).....	3 150 mm (124 in)
GROUND CLEARANCE.....	635 mm (25 in).....	635 mm (25 in).....	635 mm (25 in)
WEIGHT.....	16 440 kg (36,250 lb).....	16 895 kg (37,250 lb).....	21 430 kg (47,250 lb)

### POWER

ENGINE.....	Cummins QSB6.7 Tier 3 .....	Cummins QSB6.7 Tier 3 .....	Cummins QSB6.7 Tier 3 .....
	164 kW (220 hp) @ 2,200 rpm	194 kW (260 hp) @ 2,200 rpm	194 kW (260 hp) @ 2,200 rpm
	Precleaner and 2-stage engine air cleaner	Precleaner and 2-stage engine air cleaner	Precleaner and 2-stage engine air cleaner
TOP SPEED.....	19 km/h (12 mph).....	19 km/h (12 mph).....	14 km/h (9 mph)
COOLING.....	Side-by-side aluminum radiator, oil cooler, charge air cooler and A/C condenser	Side-by-side aluminum radiator, oil cooler, charge air cooler and A/C condenser	Side-by-side aluminum radiator, oil cooler, charge air cooler and A/C condenser
FAN.....	Fixed pitch, blower.....	Flexxaire® variable pitch, reversing.....	Flexxaire® variable pitch, reversing.....
Optional.....	Flexxaire® variable pitch, reversing.....	N/A.....	N/A.....
FUEL CAPACITY usable.....	305 L (81 US gal).....	305 L (81 US gal).....	305 L (81 US gal)
Optional.....	585 L (155 US gal).....	585 L (155 US gal).....	585 L (155 US gal)

### POWER TRAIN

TRANSMISSION.....	Single-speed mechanical.....	Single-speed mechanical.....	Single-speed mechanical.....
	Variable speed hydrostatic	Variable speed hydrostatic	Variable speed hydrostatic
	(2) variable displacement motors	(2) variable displacement motors	(2) Piston motors, infinitely variable
AXLE, FRONT.....	SD Inboard planetary .....	SFD, outboard planetary.....	SFD, outboard planetary
	+/-15° oscillation	+/-15° oscillation	+/-15° oscillation
AXLE, REAR.....	SD Inboard planetary.....	SFD, outboard planetary.....	Tigercat extreme duty tandem bogie, outboard planetary
Optional.....	SFD, outboard planetary, front and rear.....	N/A.....	N/A.....
DIFFERENTIAL LOCKS.....	Independent front and rear.....	Independent front and rear.....	Independent front and rear

### HYDRAULIC SYSTEM

PUMP, DRIVE.....	Piston.....	Piston.....	Piston
PUMP, MAIN 1.....	Piston for all machine functions.....	Piston for all machine functions.....	Piston for all machine functions
PUMP, MAIN 2.....	Gear for cooling.....	Gear for cooling.....	Gear for cooling
FILTRATION.....	(2) spin-on, 7 micron full-flow.....	(2) spin-on, 7 micron full-flow.....	(2) Spin-on, 7 micron full-flow
CYLINDERS, ARCH.....	(2) 100 mm (4 in) bore (single function).....	(2) 100 mm (4 in) bore (single function).....	(4) 115 mm (4.5 in) bore (dual function)
	(4) 100 mm (4 in) bore (dual function)	(4) 100 mm (4 in) bore (dual function)	
CYLINDERS, STEER.....	(2) 85 mm (3.25 in) bore.....	(2) 85 mm (3.25 in) bore.....	(2) 85 mm (3.25 in) bore
CYLINDERS, BLADE.....	(2) 90 mm (3.5 in) bore.....	(2) 90 mm (3.5 in) bore.....	(2) 90 mm (3.5 in) bore
RESERVOIR.....	105 L (28 US gal).....	105 L (28 US gal).....	105 L (28 US gal)

### BRAKES

DYNAMIC BRAKING.....	Hydrostatic.....	Hydrostatic.....	Hydrostatic
SECONDARY BRAKES.....	Enclosed, oil cooled.....	Enclosed, oil cooled.....	Enclosed, oil cooled
PARK BRAKE.....	Caliper; Spring applied/hydraulic release.....	Caliper; Spring applied, hydraulic release.....	Caliper; Spring applied, hydraulic release

### TIRES

STANDARD.....	30.5Lx32,20.....	30.5Lx32,20.....	30.5Lx32,26 (front); 28Lx26,16 (rear)
OPTIONAL.....	30.5Lx32,26; 35.5x32,24; 73x44-32,16.....	30.5Lx32,26; 35.5x32,24; 73x44-32,16.....	See next page*

### ARCH

STANDARD.....	Single function, continuous rotate.....	Single function, continuous rotate.....	Dual function, high lift, continuous rotate
OPTIONAL.....	Dual function, continuous rotate.....	Dual function, continuous rotate.....	N/A

### GRAPPLE

STANDARD.....	Tigercat 1,39 m <sup>2</sup> (15 ft <sup>2</sup> ).....	Tigercat 1,58 m <sup>2</sup> (17 ft <sup>2</sup> ).....	Tigercat 1,95 m <sup>2</sup> (21 ft <sup>2</sup> )
	2-cylinder, plate or box tong	2-cylinder, plate or box tong	2-cylinder, plate or box tong
MAXIMUM OPENING.....	3 505 mm (138 in).....	3 630 mm (143 in).....	3 810 mm (150 in)
OPTIONAL.....	Tigercat 1,58 m <sup>2</sup> (17 ft <sup>2</sup> ).....	Tigercat 1,76 m <sup>2</sup> (19 ft <sup>2</sup> ).....	Tigercat 2,32 m <sup>2</sup> (25 ft <sup>2</sup> )
	2-cylinder, plate or box tong.....	2-cylinder, plate or box tong	2-cylinder, plate or box tong
MAXIMUM OPENING.....	3 630 mm (143 in).....	3 710 mm (146 in).....	3 835 mm (151 in)

### BLADE

WIDTH.....	2 285 mm (90 in).....	2 285 mm (90 in).....	2 285 mm (90 in)
with optional extensions.....	2 920 mm (115 in).....	2 920 mm (115 in).....	2 920 mm (115 in)

### ELECTRICAL

BATTERY.....	(2) 12 v.....	(2) 12 v.....	(2) 12 volt
ALTERNATOR.....	80 amp, 24 v.....	80 amp, 24 v.....	80 amp
SYSTEM VOLTAGE.....	24 v.....	24 v.....	24 v



**SPECIFICATIONS**

**620D**

**630D**

**635D**

**OTHER STANDARD EQUIPMENT**

Alarm for reverse drive; Fuel suction strainer  
Fire extinguisher; Pressurized water system  
Fenders

Alarm for reverse drive; Fuel suction strainer  
Fire extinguisher; Pressurized water system  
Fenders

Alarm for reverse drive; Fuel suction strainer  
Fire extinguisher; Pressurized water system

**OPTIONAL EQUIPMENT**

Hydraulic winch; Halogen lighting package  
HID lighting package; Cold weather kit

Hydraulic winch; Halogen lighting package  
HID lighting package; Cold weather kit

Hydraulic winch; Halogen lighting package  
HID lighting package; Cold weather kit

**OPERATOR'S STATION**

CAB ..... Insulated, pressurized and isolation mounted; Air conditioner/heater/defroster; (2) doors with sliding side windows and hinged screens  
Forward sloping windshield; Machine monitoring system with LCD display; AM/FM digital stereo CD, CB radio

SEAT ..... Extreme duty Turnaround™, air ride; Fully adjustable height, seat back recline, lumbar support and armrests  
2-position mechanical lock, 100° rotating for rear-facing drive

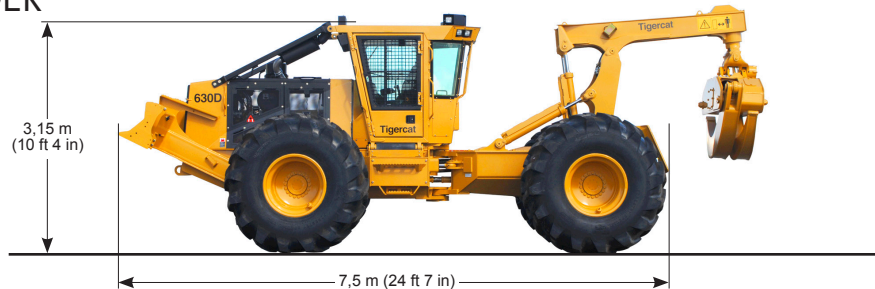
OPERATOR CONTROLS ... Electronic, joystick for arch/grapple/blade/steering; Electronic, foot pedal, front and rear with forward/reverse selector switch for drive  
IQAN MD3 colour display for machine monitoring and function adjustment

TIGERCAT RESERVES THE RIGHT TO AMEND THESE SPECIFICATIONS AT ANY TIME WITHOUT NOTICE

**TIGERCAT 620D SKIDDER**



**TIGERCAT 630D SKIDDER**



**TIGERCAT 635D SKIDDER**



\*Optional 635D front/rear tire configurations (2) 30.5Lx32,26 (4) 750/55X26.5  
(2) 35.5Lx32,24 (4) 750/55X26.5  
(2) 35.5Lx32,24 (4) 73/44.00x32,16PR  
(2) 35.5Lx32,24 (4) 30.5Lx32,26





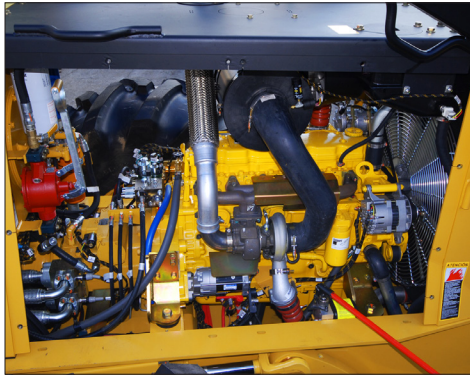
Clear sightlines to the sides of the engine compartment.



Turnaround provides full rear-facing controls for reduced neck strain when travelling grapple-forward, gathering a bunch or performing decking duties.



Easy access to both sides of the engine and all service points.



Tilting cab to access pumps and driveline.



Well guarded Tigercat axles.



Extreme long life centre section.



High capacity dual cylinder grapple options.



All D-series models are standard equipped for dual or flotation tires.



The six-wheel drive 635D is ideal for extreme duty applications.



The 620D is versatile for plantation thinning and clear fall applications.

© 2001 - 2014 Tigercat International Inc. All Rights Reserved. TIGERCAT, WIDERANGE, TURNAROUND, ER, EHS, and TEC, their respective logos, TOUGH RELIABLE PRODUCTIVE, TIGERCAT TV, "Tigercat Orange" and BETWEEN THE BRANCHES, as well as corporate and product identity, are trademarks of Tigercat International Inc., and may not be used without permission. TIGERCAT, TURNAROUND, and ER, and their respective logos are registered trademarks of Tigercat International Inc.

54 Morton Ave. East  
Brantford, Ontario  
Canada, N3R 7J7  
Mail: Box 637 N3T 5P9  
(7045) 5 0115-Tig

E-mail: [comments@tigercat.com](mailto:comments@tigercat.com)  
Internet: [www.tigercat.com](http://www.tigercat.com)  
Tel: (519) 753-2000  
Fax: (519) 753-8272

# Tigercat®